

TEXTILES TO TRANSFORM



POLYMAR[®] traffic

HIGH-VALUE TARPAULINS FOR
TRUCKS, TRANSPORT COVERINGS AND MORE

Achtung!

Aufgrund der Reproduktion ist die Farbdarstellung nicht verbindlich und kann je nach Browser und Bildschirm vom Original abweichen.

Attention!

By reason of reproduction colour display is not binding and can differ to original due to browser and monitor.

POLYMAR®

| | | 8210 | 8205 | 8556 | 8551 |
|--|--|---|---|---|---|
| Gesamtgewicht Total weight, Poids total Peso total, Peso totale Gramatura całkowita, Общий вес | | 650 g/m ² DIN EN ISO 2286-2 19.2 oz./sq.yd. ASTM D-751.10 | 680 g/m ² DIN EN ISO 2286-2 20.1 oz./sq.yd. ASTM D-751.10 | 900 g/m ² DIN EN ISO 2286-2 26.5 oz./sq.yd. ASTM D-751.10 | 700 g/m ² DIN EN ISO 2286-2 20.7 oz./sq.yd. ASTM D-751.10 |
| Reißkraft Tensile strength Résistance rupture Resistencia rotura Resistenza alla trazione Odporność na zerwanie Прочность на растяжение | Kette/Schub warp/weft chaîne/trame cadena/trama ordito/trama osnowa/wątek основа/уток | 2500 / 2500 N/50 mm DIN EN ISO 1421/V1 250 / 240 lbs. / in. ASTM D-751 Procedure B | 3000 / 3000 N/50 mm DIN EN ISO 1421/V1 320 / 310 lbs. / in. ASTM D-751 Procedure B | 4300 / 4000 N/50 mm DIN EN ISO 1421/V1 430 / 400 lbs. / in. ASTM D-751 Procedure B | 2800 / 2800 N/50 mm DIN EN ISO 1421/V1 320 / 310 lbs. / in. ASTM D-751 Procedure B |
| Weiterreißfestigkeit Tear strength Résistance déchirure Resistencia al desgarro Resistenza alla lacerazione Odporność na rozdarcie Прочность на разрыв | Kette/Schub warp/weft chaîne/trame cadena/trama ordito/trama osnowa/wątek основа/уток | 250 / 250 N DIN EN 17679 35 / 35 lbs. ASTM D-751 (8" x 10") Specimen | 300 / 300 N DIN EN 17679 50 / 40 lbs. ASTM D-751 (8" x 10") Specimen | 500 / 500 N DIN EN 17679 70 / 90 lbs. ASTM D-751 (8" x 10") Specimen | 250 / 250 N DIN EN ISO 4674-1, B 70 / 70 lbs. ASTM D-751 (8" x 10") Specimen |
| Haftfestigkeit Adhesion, Adhérence Adherencia, Adesione Adhezia Адгезия | | 100 N/5 cm PA 09.03 (intern) 11 lbs. / in. ASTM D-751 RF Weld | 100 N/5 cm PA 09.03 (intern) 11 lbs. / in. ASTM D-751 RF Weld | 100 N/5 cm PA 09.03 (intern) 11 lbs. / in. ASTM D-751 RF Weld | 100 N/5 cm PA 09.03 (intern) 11 lbs. / in. ASTM D-751 RF Weld |
| Temperaturbeständigkeit Temperature resistance Températures maximales d'utilisation Resistencia a la temperatura Resistenza alla temperatura Odporność na temperatury Температурный режим | | -40 °C / +70 °C DIN EN 1876-1 PA 07.04 (intern) -40 °F / +158 °F ASTM D-2136 PA 07.04 (internal) | -40 °C / +70 °C DIN EN 1876-1 PA 07.04 (intern) -40 °F / +158 °F ASTM D-2136 PA 07.04 (internal) | -40 °C / +70 °C DIN EN 1876-1 PA 07.04 (intern) -40 °F / +158 °F ASTM D-2136 PA 07.04 (internal) | -40 °C / +80 °C DIN EN 53361 PA 07.04 (intern) -40 °F / +176 °F ASTM D-2136 PA 07.04 (internal) |
| Brennverhalten Fire behaviour Réaction au feu Comportamiento a la llama Comportamento alla fiamma Ogniodporność Возгораемость | | ISO 3795 <100 mm/min. | ISO 3795 <100 mm/min. | ISO 3795 <100 mm/min. | Nachbrennzeit < 2sec burning time after flame stop <2 sec Durée d'inflammation après extinction de la flamme <2 sec Tiempo de combustión posterior <2 seg. Tempo di postcombustione <2 sec Czas spalania po ustaniu płomienia <2 sekundy время горения после пламени <2 секунд DIN EN ISO 6941 |

POLYMAR® FR

| | 8212 | 8509 | 8540 |
|---|--|---|--|
| Schwerentflammbar Passes firetest Réaction au feu Ignífugo segun norma Ignífugo secondo Certyfikaty ogniodporności Огнестойкость | BS 7837 California T 19 D.M. 26.06.84 (UNI 9177): CL. 2 DIN 4102: B1 NFP 92507: M2 (certain colors) EN 13501-1: B-s2-d0 GOST: G1 NFPA 701 Test 2 ASTM E 84 Class A CAN ULC S109 | BS 7837 D.M. 26.06.84 (UNI 9177): CL. 2 DIN 4102: B1 NFP 92507: M2 EN 13501-1: B-s2-d0 GOST: G1 NFPA 701 Test 2 | BS 7837 California T 19 D.M. 26.06.84 (UNI 9177): CL. 2 DIN 4102: B1 NFP 92507: M2 (coloris blanc) EN 13501-1: B-s1-d0 GOST: G1 ÖNorm: B1 AS 1530 part 2 AS 1530 part 3 |

Bei den angegebenen technischen Daten handelt es sich um Durchschnittswerte. Geringfügige Farbschwankungen vorbehalten. RAL-Farben in Anlehnung. Stets Gültigkeit der FR-Zulassung prüfen. Alle Mehler Technologies-Produkte entsprechen der EU-Verordnung REACH (Registration, Evaluation, Authorisation of Chemicals). Die Herstellung unserer technischen Textilien ist nach ISO 9001 und ISO 50001 für Energiemanagement zertifiziert. Weitere Varianten auf Anfrage, Programmänderungen vorbehalten.

The indicated technical specifications are average values. Colours are subject to slight variations. References made to RAL are indications only. Always check the validity of fire certificate. All Mehler Technologies products are in accordance with the European REACH directive (Registration, Evaluation and Authorisation of Chemicals). Manufactured in Germany under the internationally recognized standard of quality ISO 9001 and ISO 50001 for energy management. Other versions upon request, program changes reserved.

8205 + 8509: entspricht (DIN) EN 12641-1
selon la norme (DIN) EN 12641-1
corrisponde a (DIN) EN 12641-1

8556 + 8540: entspricht (DIN) EN 12641-2
selon la norme (DIN) EN 12641-2
corrisponde a (DIN) EN 12641-2

Les données techniques indiquées sont des valeurs moyennes. Sous réserve de légers changements de coloris. Coloris approchants RAL. Veuillez toujours vérifier la validité des certificats anti-feu. Tous les produits Mehler Technologies sont conformes à la réglementation Européenne REACH – enregistrement, évaluation et autorisation des substances chimiques. Toutes nos fabrications sont certifiées selon les standards de qualité internationaux ISO 9001 et ISO 50001 pour la gestion de l'énergie. Autres versions sur demande, sous réserve de modifications de la gamme.

I dati tecnici sono la risultanza di valori medi di produzione. Sono possibili leggere variazioni di colore. I colori sono prodotti in rispondenza alla scala RAL. Verificare sempre la validità delle certificazioni. Tutti i prodotti Mehler Technologies rispondono alla normativa REACH (Registration, Evaluation and Authorisation of Chemicals). La produzione dei nostri tessuti è certificata secondo ISO 9001 e ISO 50001 per la gestione della prestazione energetica. Su richiesta, si possono produrre altre versioni. Modifiche della gamma sempre possibili.

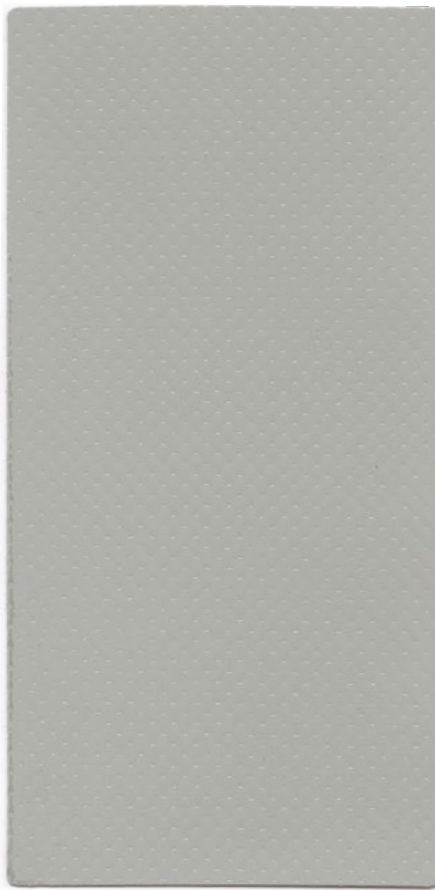
complies with (DIN) EN 12641-1
corresponde a (DIN) EN 12641-1
Соответствует (DIN) EN 12641-1

complies with (DIN) EN 12641-2
corresponde a (DIN) EN 12641-2
Соответствует (DIN) EN 12641-2

Características técnicas indicadas en valores medios. Sujetas a pequeñas alteraciones del color. Referencias al RAL son solo indicativas. Siempre verificar la validez del certificado de ignición. Todos los productos de Mehler Technologies cumplen la normativa REACH (Registration, Evaluation and Authorisation of Chemicals [Registro, Evaluación y Autorización de Sustancias Químicas]). La fabricación de nuestros productos está certificada según la ISO 9001 y la ISO 50001 (para la gestión energética). Otras variantes bajo consulta. Posibles modificaciones sin previo aviso.

Все указанные технические данные базируются на основе выявленных средних показателей. Цвета приближены к RAL. Незначительные цветовые отклонения возможны. Все продукты Mehler Technologies соответствуют ЕС директиве «REACH» (Registration, Evaluation and Authorisation of Chemicals). Проверяйте срок действия сертификата пожарной безопасности. Произведено и сертифицировано в Германии согласно нормативам стандартов качества ISO 9001 и ISO 50001 для управления энергопотреблением. Другие варианты по запросу. Возможны изменения в программе.

POLYMAR® HOCHGLANZ 8210



907 weiß RAL 9010
218, 250, 300, 320 cm
85.83", 98.43", 118.11", 125.98"



142 creme
300 cm
118.11"



123 beige
250 cm
98.43" RAL 1014



168 zinkgelb
250 cm
98.43" RAL 1018



119 brillantgelb
250 cm
98.43"



148 signalgelb
300 cm
118.11" RAL 1003



244 reinorange
250 cm
98.43" RAL 2004



370 karminrot
250 cm
98.43" RAL 3002



581 himmelblau
250 cm
98.43" RAL 5015



543 königsblau
218, 250, 300 cm
85.83", 98.43", 118.11"



537 enzianblau
250 cm
98.43" RAL 5010



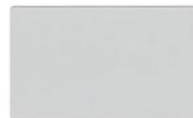
566 kobaltblau
250 cm
98.43" RAL 5013



636 hollandgrün RAL 6026
218, 250, 300 cm
85.83", 98.43", 118.11"



682 russischgrün
250 cm
98.43" RAL 6028



729 lichtgrau
250 cm
98.43" RAL 7035



705 hellgrau
218, 250, 300 cm
85.83", 98.43", 118.11"



712 steingrau
250 cm
98.43"



763 alugrau
250 cm
98.43" RAL 7037

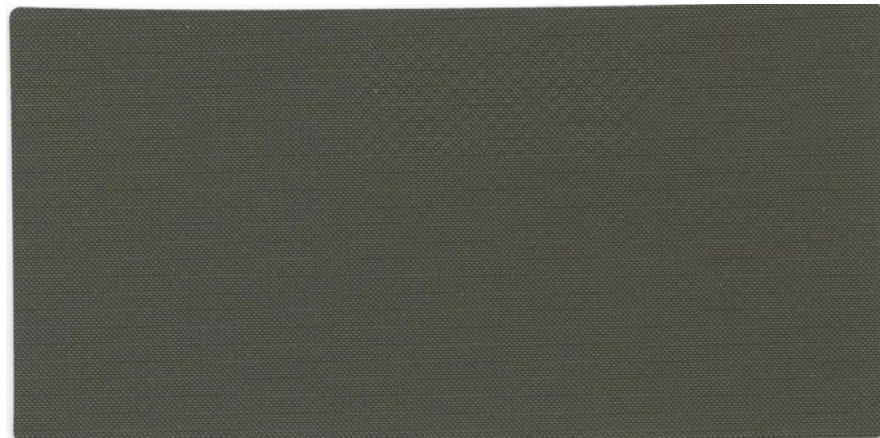


905 tiefschwarz
250, 300 cm
98.43", 118.11" RAL 9005



911 silber
250 cm
98.43" RAL 9006

POLYMAR® BW-TL 8305-0253 8551



691 N bronzegrün
150, 250 cm
59.06", 98.43" RAL 6031

POLYMAR® HOCHGLANZ 8205



| | | | | | | | |
|--|---------------------|--|-------------------------|--|---------------------------|-------------------------|---------------------------|
| 008 250 cm 98.43" | transparent | 907** 150, 204, 218, 250, 275, 300, 320 cm | weiß RAL 9010 | 141 250 cm 98.43" | perlweiß RAL 1013 | 143 250 cm 98.43" | hellelfenbein RAL 1015 |
| 123 250 cm 98.43" | beige RAL 1014 | 168 250 cm 98.43" | zinkgelb RAL 1018 | 101 kosmosgelb RAL 1021 218, 250 cm 85.83", 98.43" | | 119 250 cm 98.43" | brillantgelb |
| 148 218, 250, 275, 300 cm 85.83", 98.43", 108.27", 118.11" | signalgelb RAL 1003 | 175 250 cm 98.43" | melonengelb RAL 1028 | 137 250 cm 98.43" | narzissengelb RAL 1007 | 206 250 cm 98.43" | tieforange RAL 2011 |
| 221 218, 250 cm 85.83", 98.43" | orange RAL 2008 | 244 250, 300 cm 98.43", 118.11" | reinorange RAL 2004 | 290 250 cm 98.43" | verkehrsrot RAL 3020 | 340 250 cm 98.43" | coca cola* Rot 2000 |

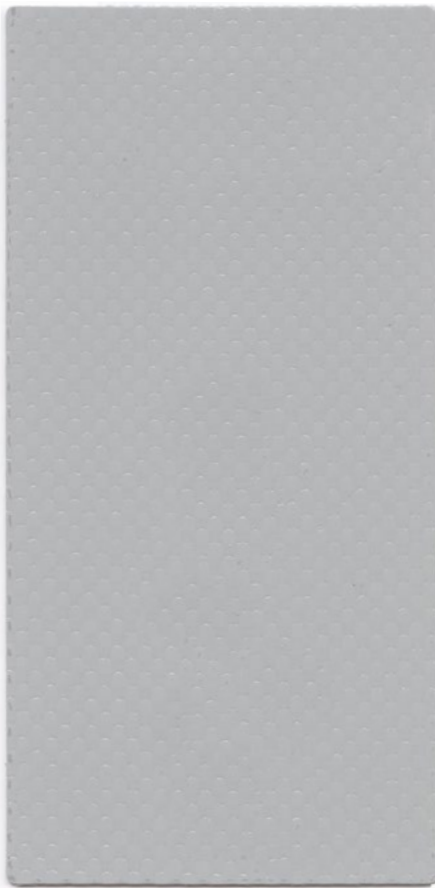
* Mit offizieller Genehmigung der:
Officially approved by:
Avec l'autorisation officielle de:
Con la autorización oficial de:
Con l'approvazione ufficiale di:
Coca Cola GmbH

| | | | | | | | |
|---------------------------------------|----------------------|--|--------------------|-------------------------|------------|-------------------------|------------------------|
| 356 250, 300 cm 98.43", 118.11" | feuerrot RAL 3000 | 370 218, 250, 275, 300 cm 85.83", 98.43", 108.27", 118.11" | karminrot RAL 3002 | 311 250 cm 98.43" | beaujolais | 323 250 cm 98.43" | viola Pantone 273 C |
|---------------------------------------|----------------------|--|--------------------|-------------------------|------------|-------------------------|------------------------|

| | | | | | | | | | | | |
|---------------------------------------|--------------------------|--|-----------------------|--|----------------------|--|--------------------------|--|--------------------------------------|---|-----------|
| 549 218, 250 cm 85.83", 98.43" | lichtblau RAL 5012 | 583 250 cm 98.43" | wasserblau | 543 218, 250, 300 cm 85.83", 98.43", 118.11" | königsblau blau | 572 250 cm 98.43" | blau | 537 enzianblau RAL 5010 218, 250, 275 cm 85.83", 98.43", 108.27" | 557 218, 250 cm 85.83", 98.43" | ultrablau | |
| 544 250, 275 cm 98.43", 108.27" | ultramarin RAL 5002 | 566 218, 250, 275 cm 85.83", 98.43", 108.27" | kobaltblau RAL 5013 | 619 250 cm 98.43" | gelbgrün RAL 6018 | 602 250 cm 98.43" | verkehrsgrün RAL 6024 | 663 218, 250 cm 85.83", 98.43" | smaragdgrün RAL 6001 | 636 hollandgrün RAL 6026 218, 250, 275 cm 85.83", 98.43", 108.27" | |
| 682 250 cm 98.43" | russischgrün RAL 6028 | 679 250 cm 98.43" | moosgrün RAL 6005 | 729 218, 250, 275, 300 cm 85.83", 98.43", 108.27", 118.11" | lichtgrau RAL 7035 | 717 250, 275 cm 98.43", 108.27" | blassgrau | 705 218, 250 cm 85.83", 98.43" | hellgrau | 788 250 cm 98.43" | staubgrau |
| 763 218, 250 cm 85.83", 98.43" | alugrau RAL 7037 | 782 250 cm 98.43" | anthrazit RAL 7016 | 830 250 cm 98.43" | schoko RAL 8017 | 905 218, 250, 275, 300 cm 85.83", 98.43", 108.27", 118.11" | tiefschwarz RAL 9005 | 911 250, 275, 300 cm 98.43", 108.27", 118.11" | silber RAL 9006 | | |

** 907
59.06", 80.31", 85.83", 98.43",
108.27", 118.11", 125.98"

POLYMAR® HOCHGLANZ 8556



| | | | | | | | |
|---|-------------------------|--|--------------------------|--|--------------------------|--|---------------------------|
| 907 250, 300, 320 cm 98.43", 118.11", 125.98" | weiß RAL 9010 | 916 300 cm 118.11" | verkehrsweiß RAL 9016 | 141 300 cm 118.11" | perlweiß RAL 1013 | 143 300 cm 118.11" | hellelfenbein RAL 1015 |
| 123 300 cm 118.11" | beige RAL 1014 | 168 300 cm 118.11" | zinkgelb RAL 1018 | 101 300 cm 118.11" | kosmosgelb RAL 1021 | 107 300 cm 118.11" | ginstergelb RAL 1032 |
| 119 300 cm 118.11" | brillantgelb | 148 300 cm 118.11" | signalgelb RAL 1003 | 175 300 cm 118.11" | melonengelb RAL 1028 | 137 300 cm 118.11" | narzissengelb RAL 1007 |
| 221 300 cm 118.11" | orange RAL 2008 | 244 300 cm 118.11" | reinorange RAL 2004 | 205 300 cm 118.11" | internationalorange | 290 300 cm 118.11" | verkehrsrot RAL 3020 |
| 356 300, 320 cm 118.11", 125.98" | feuerrot RAL 3000 | 370 300 cm 118.11" | karminrot RAL 3002 | 371 300 cm 118.11" | burgund | 571 300 cm 118.11" | eisblau |
| 543 300 cm 118.11" | königsblau | 537 300, 320 cm 118.11", 125.98" | enzianblau RAL 5010 | 520 300 cm 118.11" | mittelblau | 549 300 cm 118.11" | lichtblau RAL 5012 |
| 552 300 cm 118.11" | saphirblau RAL 5003 | 566 300 cm 118.11" | kobaltblau RAL 5013 | 597 300 cm 118.11" | nachtblau RAL 5011 | 586 300 cm 118.11" | lagune |
| 557 300, 320 cm 118.11", 125.98" | ultrablau | 544 300 cm 118.11" | ultramarin RAL 5002 | 541 300, 320 cm 118.11", 125.98" | dunkelblau | 619 300 cm 118.11" | gelbgrün RAL 6018 |
| 634 300 cm 118.11" | türkisgrün | 636 300 cm 118.11" | hollandgrün RAL 6026 | 663 300 cm 118.11" | smaragdgrün RAL 6001 | 602 300 cm 118.11" | verkehrsgrün RAL 6024 |
| 623 300 cm 118.11" | tanne | 679 300 cm 118.11" | moosgrün RAL 6005 | 746 300 cm 118.11" | grauweiß RAL 9002 | 729 300 cm 118.11" | lichtgrau RAL 7035 |
| 717 300 cm 118.11" | blassgrau | 705 300 cm 118.11" | hellgrau | 711 300 cm 118.11" | verkehrsgrau RAL 7042 | 788 300 cm 118.11" | staubgrau |
| 905 300 cm 118.11" | tiefschwarz RAL 9005 | 763 300 cm 118.11" | alugrau RAL 7037 | 830 300 cm 118.11" | schoko RAL 8017 | 911 300, 320 cm 118.11", 125.98" | silber RAL 9006 |



Sales companies and Sales offices

France / Mehler Texnologies France
3 chemin des Cytises, Bât. A1
F-69340 Francheville
info-fr@mehler-technologies.com

U.K. / Mehler Texnologies Ltd.
Hollinwood Business Centre
Albert Street, Oldham,
Lancs. OL8 3QL
info-uk@mehler-technologies.com

Italy / Mehler Texnologies S.r.l.
Via Enrico Fermi 52/A
I-20019 Settimo Milanese MI
info-it@mehler-technologies.com

Poland / Mehler Texnologies Sp. z o.o.
ul. Mikołajczyka 31a
PL-41-200 Sosnowiec
info-pl@mehler-technologies.com

Latvia / SIA „Low & Bonar Latvia“
Krustpils iela 54 E
Rīga, LV-1057
info-lv@mehler-technologies.com

Romania / Mehler Texnologies Romania S.R.L.
Str. Linia de Centura Nr.2, D2
RO-077175 Stefanestii de Jos
(Judetul Ilfov)
info-ro@mehler-technologies.com

Turkey / Mehler Texnologies Ltd. Şti.
Başakşehir San. Sit. A Blok No: 22,
Başakşehir, 34490 İstanbul, Turkey
info-tr@mehler-technologies.com

U.S.A / Mehler Texnologies Inc.
220 B Cabell Street
Martinsville, VA 24112
info-usa@mehler-technologies.com

United Arab Emirates / Mehler Texnologies Middle East Trading LLC
Liberty Building, Office #103
Al Garhoud – Dubai, U.A.E.
info-uae@mehler-technologies.com

India / Low & Bonar India Pvt. Ltd.
924, 9th Floor, Wave Silver Tower, Sector 18,
Noida 201 301, UP, India
info-in@mehler-technologies.com

Malaysia / Mehler Texnologies South East Asia Rep office
Co-Labs
Level 4, The Starling Mall
No. 6, Jln SS 21/37, Damansara Utama
47400 Petaling Jaya
Selangor, Malaysia
info-mys@mehler-technologies.com

Russia / OOO «Mehler Texnologies»
Sadovnicheskaya embankment 79
115035 Moscow
info-ru@mehler-technologies.com

Australia / Mehler Texnologies Office
PO BOX 339, Waterford West,
Queensland 4133, Australia
info-aus@mehler-technologies.com

China / Mehler Texnologies Office
No.9 Xingtang West Road
Chunjiang Zhen, New District
213034, Changzhou, China
info-chn@mehler-technologies.com

Manufacturing and sales

Mehler Texnologies GmbH
Rheinstrasse 11
D-41836 Hückelhoven
info-de@mehler-technologies.com

Mehler Texnologies GmbH
Edelzeller Strasse 44
D-36043 Fulda
info-de@mehler-technologies.com

Mehler Texnologies s.r.o.
Šlechtova 860
CZ-512 51 Lomnice nad Popelkou
info-cz@mehler-technologies.com