

TEXTILES TO TRANSFORM



# POLYMAR<sup>®</sup> scrim

**Achtung!**

Aufgrund der Reproduktion ist die Farbdarstellung nicht verbindlich und kann je nach Browser und Bildschirm vom Original abweichen.

**Attention!**

By reason of reproduction colour display is not binding and can differ to original due to browser and monitor.

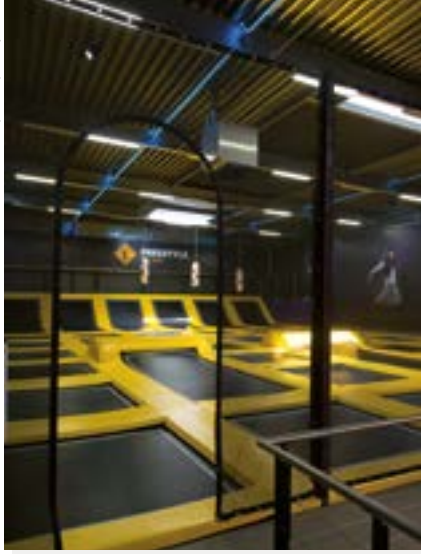
TECHNICAL TEXTILES FOR  
AGRICULTURE, ARCHITECTURE AND LEISURE

by courtesy of SidiJK BV, NL



by courtesy of ELI Play, NL

by courtesy of SidiJK BV, NL



by courtesy of Zelmakerij Kolbrink, NL

by courtesy of SidiJK BV, NL



by courtesy of Zelmakerij Kolbrink, NL



by courtesy of Boen Agrosystems BV, NL

# POLYMAR® scrim

	<b>7915 5300</b>	<b>7916 5300</b>	<b>7908 5300</b>	<b>7912 5300</b>	<b>7970 5300</b>	<b>7986 0340</b>	<b>7940 5300</b>
<b>Gesamtgewicht</b> Total weight Poids total, Peso total Peso totale, Bec	<b>295 g/m<sup>2</sup></b> DIN EN ISO 2286-2 <b>8.7 oz./sq.yd.</b> ASTM D-751.10	<b>250 g/m<sup>2</sup></b> DIN EN ISO 2286-2 <b>7.4 oz./sq.yd.</b> ASTM D-751.10	<b>420 g/m<sup>2</sup></b> DIN EN ISO 2286-2 <b>12.4 oz./sq.yd.</b> ASTM D-751.10	<b>300 g/m<sup>2</sup></b> DIN EN ISO 2286-2 <b>8.9 oz./sq.yd.</b> ASTM D-751.10	<b>340 g/m<sup>2</sup></b> DIN EN ISO 2286-2 <b>10 oz./sq.yd.</b> ASTM D-751.10	<b>1050 g/m<sup>2</sup></b> EN ISO 2286-2 <b>31 oz./sq.yd.</b> ASTM D-751.10	<b>580 g/m<sup>2</sup></b> DIN EN ISO 2286-2 <b>17.1 oz./sq.yd.</b> ASTM D-751.10
<b>Offene Fläche</b> Openess factor Surface ouverte Superficie aperta Superficie abierta Открытая площадь	<b>ca. 40 %</b> PA 12.03 (intern)	<b>ca. 45 %</b> PA 12.03 (intern)	<b>ca. 40 %</b> PA 12.03 (intern)	<b>ca. 45 %</b> PA 12.03 (intern)	<b>ca. 25 %</b> PA 12.03 (intern)	<b>ca. 24 %</b> PA 12.03 (intern)	<b>ca. 40 %</b> PA 12.03 (intern)
<b>Reißkraft</b> Tensile strength Résistance rupture Carga a la rotura Resistenza alla trazione Прочность на растяжение	<b>1800 / 2000 N/50 mm</b> DIN EN ISO 1421/V1	<b>1800 / 1700 N/50 mm</b> DIN EN ISO 1421/V1	<b>3000 / 2300 N/50 mm</b> DIN EN ISO 1421/V1	<b>2000 / 2000 N/50 mm</b> DIN EN ISO 1421/V1	<b>3000 / 2500 N/50 mm</b> DIN EN ISO 1421/V1	<b>6000 / 5500 N/50 mm</b> DIN EN ISO 1421/V1	<b>4000 / 4000 N/50 mm</b> DIN EN ISO 1421/V1
<b>Weiterreißfestigkeit</b> Tear strength Résistance déchirure Resistencia al desgarro Resistenza alla lacerazione Прочность на разрыв	<b>170 / 200 lbs./in.</b> ASTM D-751	<b>170 / 160 lbs./in.</b> ASTM D-751	<b>270 / 220 lbs./in.</b> ASTM D-751	<b>230 / 230 lbs./in.</b> ASTM D-751	<b>320 / 300 lbs./in.</b> ASTM D-751	<b>680 / 620 lbs. / in.</b> ASTM D-751	<b>450 / 450 lbs./in.</b> ASTM D-751
<b>Temperaturbeständigkeit</b> Temperature resistance Tempèratures maximales d'utilisation Resistencia a la temperatura Resistenza alla temperatura Температурный режим	<b>350 / 400 N</b> DIN EN 17679	<b>350 / 330 N</b> DIN EN 17679	<b>700 / 400 N</b> DIN EN 17679	<b>400 / 400 N</b> DIN EN 17679	<b>450 / 420 N</b> DIN EN 17679	<b>1800 / 1800 N</b> DIN EN 17679	<b>ca.1000 / 1000 N</b> DIN EN 17679
<b>Transmission @550 nm</b> Translucence Translucidité Permeabilità alla luce Traslucidez Светопроницаемость	<b>80 / 80 lbs.</b> ASTM D-751 (8" x 10") Specimen	<b>65 / 60 lbs.</b> ASTM D-751 (8" x 10") Specimen	<b>100 / 100 lbs.</b> ASTM D-751 (8" x 10") Specimen	<b>80 / 80 lbs.</b> ASTM D-751 (8" x 10") Specimen	<b>70 / 60 lbs.</b> ASTM D-751 (8" x 10") Specimen	<b>330 / 330 lbs.</b> ASTM D-751 (8" x 10") Specimen	<b>250 / 210 lbs.</b> ASTM D-751 (8" x 10") Specimen
<b>Lichtechtheit</b> Light fastness Tenue du coloris à la lumière Solidità alla luce Solidez a la luz Светостойкость	<b>-20 °C / +70 °C</b> DIN EN 1876-1 PA 07.04 (intern)	<b>-20 °C / +70 °C</b> DIN EN 1876-1 PA 07.04 (intern)	<b>-20 °C / +70 °C</b> DIN EN 1876-1 PA 07.04 (intern)	<b>-20 °C / +70 °C</b> DIN EN 1876-1 PA 07.04 (intern)	<b>-20 °C / +70 °C</b> DIN EN 1876-1 PA 07.04 (intern)	<b>-20 °C / +70 °C</b> DIN EN 1876-1 PA 07.04 (intern)	<b>-20 °C / +70 °C</b> DIN EN 1876-1 PA 07.04 (intern)
<b>Nahtfestigkeit (2 cm Naht)</b> Seam strength (2 cm Seam) Résistance soudure Resistenza delle giunzioni Resistencia de la costura Прочность шва	<b>-4 °F / +158 °F</b> ASTM D-2136 PA 07.04 (intern)	<b>-4 °F / +158 °F</b> ASTM D-2136 PA 07.04 (intern)	<b>-4 °F / +158 °F</b> ASTM D-2136 PA 07.04 (intern)	<b>-4 °F / +158 °F</b> ASTM D-2136 PA 07.04 (intern)	<b>-4 °F / +158 °F</b> ASTM D-2136 PA 07.04 (intern)	<b>-4 °F / +158 °F</b> ASTM D-2136 PA 07.04 (intern)	<b>-4 °F / +158 °F</b> ASTM D-2136 PA 07.04 (intern)
<b>Luftdurchlässigkeit</b> Air permeability Perméabilité à l'air Permeabilità all'aria Permeabilidad al aire Воздухо-проходимость	<b>ca. 40 %</b> @550 nm	<b>ca. 45 %</b> @550 nm	<b>ca. 40 %</b> @550 nm	<b>ca. 40 %</b> @550 nm	<b>ca. 25 %</b> @550 nm	<b>ca. 27 %</b> @550 nm	<b>ca. 40 %</b> @550 nm
<b>Standard</b>	<b>&gt;6</b> DIN EN ISO 105 B02	<b>&gt;6</b> DIN EN ISO 105 B02	<b>&gt;6</b> DIN EN ISO 105 B02	<b>&gt;6</b> DIN EN ISO 105 B02	<b>&gt;6</b> DIN EN ISO 105 B02	<b>&gt;6</b> DIN EN ISO 105 B02	<b>&gt;6</b> DIN EN ISO 105 B02
<b>Make to order</b>	<b>800 N/50 mm</b> DIN EN ISO 1421/V1 @2 cm <b>90 lbs. / in.</b> ASTM D-751 Procedure B	<b>800 N/50 mm</b> DIN EN ISO 1421/V1 @2 cm <b>90 lbs. / in.</b> ASTM D-751 Procedure B	<b>1000 N/50 mm</b> DIN EN ISO 1421/V1 @2 cm <b>100 lbs. / in.</b> ASTM D-751 Procedure B	<b>500 N/50 mm</b> DIN EN ISO 1421/V1 @2 cm <b>55 lbs. / in.</b> ASTM D-751 Procedure B	<b>1500 N/50 mm</b> DIN EN ISO 1421/V1 @2 cm <b>170 lbs. / in.</b> ASTM D-751 Procedure B	<b>4000 N/50 mm</b> DIN EN ISO 1421/V1 @2 cm	<b>1500 N/50 mm</b> DIN EN ISO 1421/V1 @2 cm <b>170 lbs. / in.</b> ASTM D-751 Procedure B
<b>Standard</b>	<b>ca. 7000 l/m<sup>2</sup>*sec</b> DIN EN ISO 9237	<b>ca. 8000 l/m<sup>2</sup>*sec</b> DIN EN ISO 9237	<b>ca. 7000 l/m<sup>2</sup>*sec</b> DIN EN ISO 9237	<b>ca. 8000 l/m<sup>2</sup>*sec</b> DIN EN ISO 9237	<b>ca. 5000 l/m<sup>2</sup>*sec</b> DIN EN ISO 9237	<b>3560 l/m<sup>2</sup>*sec</b> DIN EN ISO 9237	<b>ca. 7000 l/m<sup>2</sup>*sec</b> DIN EN ISO 9237
<b>Make to order</b>	✓	✓	✓	✓	✓	✓	✓

Bei den angegebenen technischen Daten handelt es sich um Durchschnittswerte. Geringfügige Farbschwankungen vorbehalten. RAL-Farben in Anlehnung. Stets Gültigkeit der FR-Zulassung prüfen. Alle Mehler Technologies-Produkte entsprechen der EU-Verordnung REACH (Registration, Evaluation, Authorisation of Chemicals). Die Herstellung unserer technischen Textilien ist nach ISO 9001 und ISO 50001 für Energiemanagement zertifiziert. Weitere Varianten auf Anfrage, Programmänderungen vorbehalten.

The indicated technical specifications are average values. Colours are subject to slight variations. References made to RAL are indications only. Always check the validity of fire certificate. All Mehler Technologies products are in accordance with the European REACH directive (Registration, Evaluation and Authorisation of Chemicals). Manufactured in Germany under the internationally recognized standard of quality ISO 9001 and ISO 50001 for energy management. Other versions upon request, program changes reserved.

Les données techniques indiquées sont des valeurs moyennes. Sous réserve de légers changements de coloris. Coloris approchants RAL. Veuillez toujours vérifier la validité des certificats anti-feu. Tous les produits Mehler Technologies sont conformes à la réglementation Européenne REACH – enregistrement, évaluation et autorisation des substances chimiques. Toutes nos fabrications sont certifiées selon les standards de qualité internationaux ISO 9001 et ISO 50001 pour la gestion de l'énergie. Autres versions sur demande, sous réserve de modifications de la gamme.

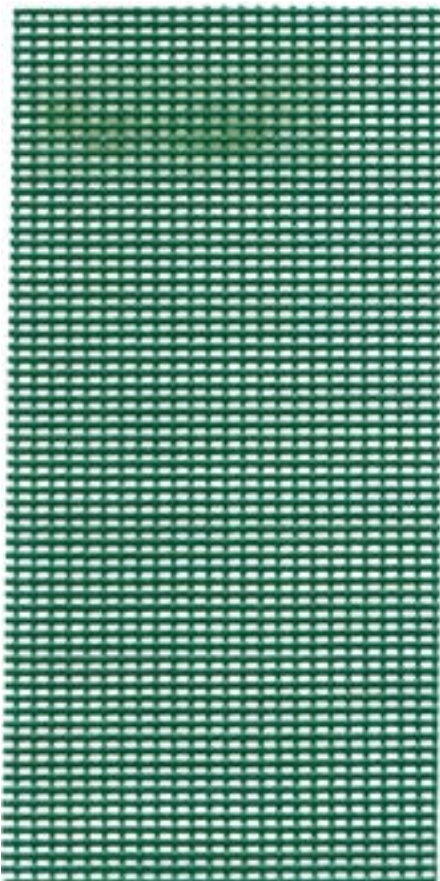
Características técnicas indicadas en valores medios. Sujetos a pequeñas alteraciones del color. Referencias al RAL son solo indicativas. Siempre verificar la validez del certificado de ignición. Todos los productos de Mehler Technologies cumplen la normativa REACH (Registration, Evaluation and Authorisation of Chemicals [Registro, Evaluación y Autorización de Sustancias Químicas]). La fabricación de nuestros productos está certificada según la ISO 9001 y la ISO 50001 (para la gestión energética). Otras variantes bajo consulta. Posibles modificaciones sin previo aviso.

I dati tecnici sono la risultanza di valori medi di produzione. Sono possibili leggere variazioni di colore. I colori sono prodotti in rispondenza alla scala RAL. Verificare sempre la validità delle certificazioni. Tutti i prodotti Mehler Technologies rispondono alla normativa REACH (Registration, Evaluation and Authorisation of Chemicals). La produzione dei nostri tessuti è certificata secondo ISO 9001 e ISO 50001 per la gestione della prestazione energetica. Su richiesta, si possono produrre altre versioni. Modifiche della gamma sempre possibili.

Все указанные технические данные базируются на основе выявленных средних показателей. Цвета приближены к RAL. Незначительные цветовые отклонения возможны. Все продукты Mehler Technologies соответствуют ЕС директиве «REACH» (Registration, Evaluation and Authorisation of Chemicals). Проверьте срок действия сертификата пожарной безопасности. Произведено и сертифицировано в Германии согласно нормативам стандартов качества ISO 9001 и ISO 50001 для управления энергопотреблением. Другие варианты по запросу. Возможны изменения в программе.



## POLYMAR® scrim 7915

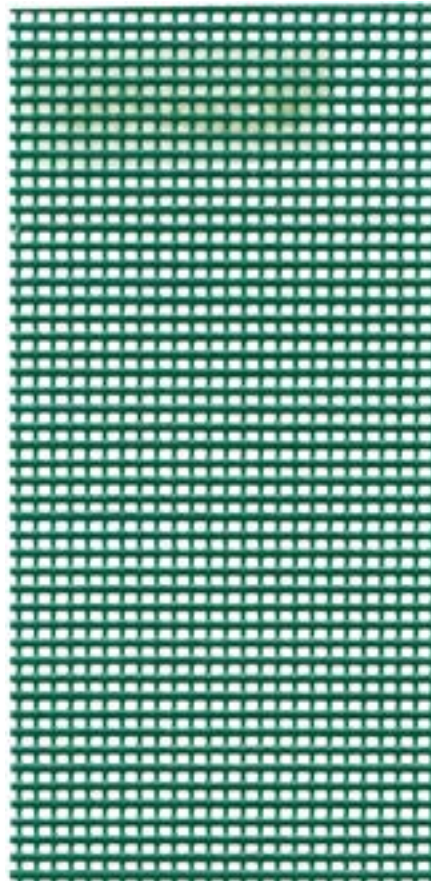


Widths and colours available:

250 cm	370 cm
907	
543	370
586	
682	682
691	691
763	
905	905

FR type scrim 7917 available, colours 907 white and 905 black  
FR-Variante scrim 7917 verfügbar, Farben 907 Weiß und 905 Schwarz

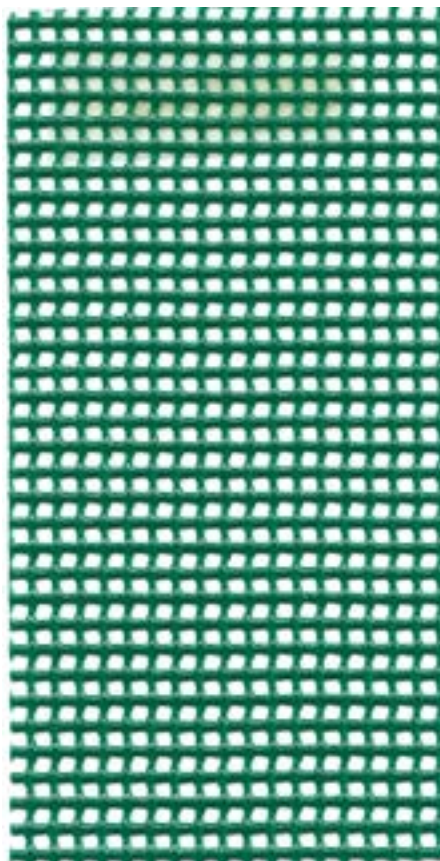
## POLYMAR® scrim classic 7916



Widths and colours available:

250 cm	370 cm
907	
682	
905	905

## POLYMAR® scrim sports 7908

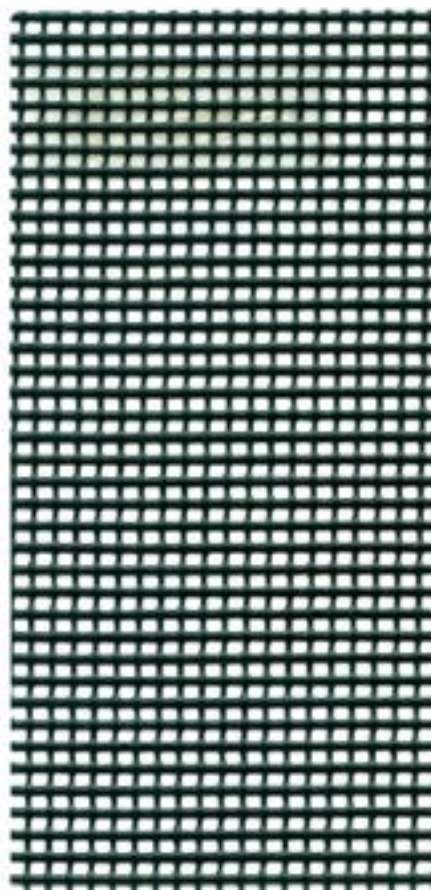


Widths and colours available:

302 cm
370
586
682
905

(available as FR type 7909 on request)

## POLYMAR® scrim 7912



Widths and colours available:

234 cm
905



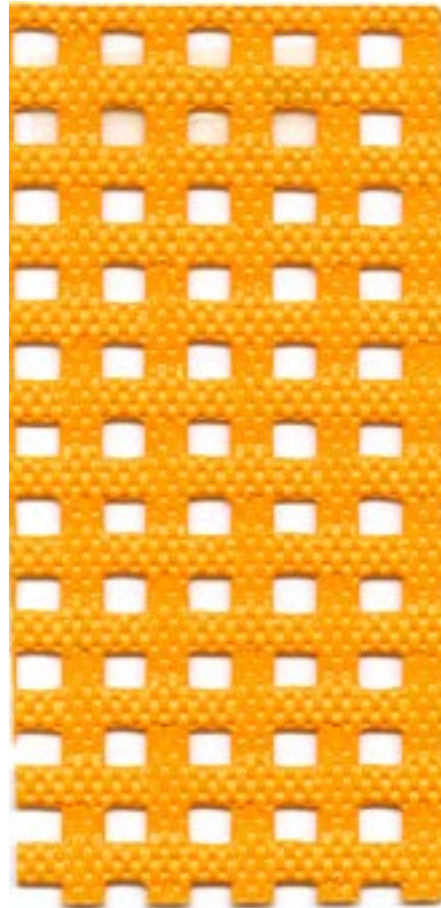
## POLYMAR® scrim compact 7970



Widths and  
colours available:

**300 cm**  
907  
682

## POLYMAR® power scrim FR 7986

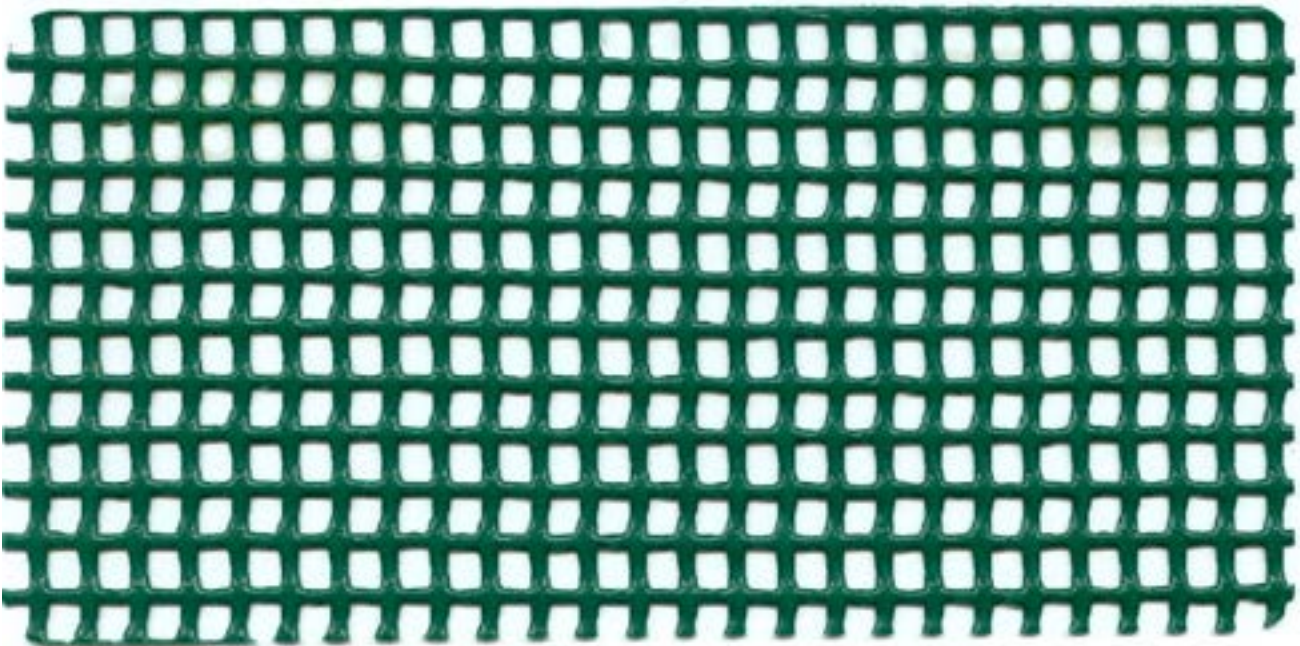


Widths and  
colours available:

**290 cm**  
207

Available with and  
without embossing

## POLYMAR® scrim cargo 7940



907 Weiß



370 Karminrot



586 Lagune



543 Königsblau



682 Russischgrün



691 Bronze grün



763 Alugrau



905 Schwarz

Other colours upon request, program changes reserved





by courtesy of Etan Trampolines BV, NL

**Sales companies and Sales offices**

**France / Mehler Technologies France**  
3 chemin des Cytises, Bât. A1  
F-69340 Francheville  
info-fr@mehler-technologies.com

**U.K. / Mehler Technologies Ltd.**  
Hollinwood Business Centre  
Albert Street, Oldham,  
Lancs. OL8 3QL  
info-uk@mehler-technologies.com

**Italy / Mehler Technologies S.r.l.**  
Via Enrico Fermi 52/A  
I-20019 Settimo Milanese MI  
info-it@mehler-technologies.com

**Poland / Mehler Technologies Sp. z o.o.**  
ul. Mikołajczyka 31a  
PL-41-200 Sosnowiec  
info-pl@mehler-technologies.com

**Latvia / SIA „Low & Bonar Latvia“**  
Krustpils iela 54 E  
Rīga, LV-1057  
info-lv@mehler-technologies.com

**Romania / Mehler Technologies Romania S.R.L.**  
Str. Linia de Centura Nr.2, D2  
RO-077175 Stefanestii de Jos  
(Judetul Ilfov)  
info-ro@mehler-technologies.com

**Turkey / Mehler Technologies Ltd. Şti.**  
Başakşehir San. Sit. A Blok No: 22,  
Başakşehir, 34490 İstanbul, Turkey  
info-tr@mehler-technologies.com

**U.S.A / Mehler Technologies Inc.**  
220 B Cabell Street  
Martinsville, VA 24112  
info-usa@mehler-technologies.com

**United Arab Emirates / Mehler Technologies Middle East Trading LLC**  
Liberty Building, Office #103  
Al Garhoud – Dubai, U.A.E.  
info-uae@mehler-technologies.com

**India / Low & Bonar India Pvt. Ltd.**  
924, 9th Floor, Wave Silver Tower, Sector 18,  
Noida 201 301, UP, India  
info-in@mehler-technologies.com

**Malaysia / Mehler Technologies South East Asia Rep office**  
Co-Labs  
Level 4, The Starling Mall  
No. 6, Jln SS 21/37, Damansara Utama  
47400 Petaling Jaya  
Selangor, Malaysia  
info-mys@mehler-technologies.com

**Russia / OOO «Mehler Technologies»**  
Sadovnicheskaya embankment 79  
115035 Moscow  
info-ru@mehler-technologies.com

**Australia / Mehler Technologies Office**  
PO BOX 339, Waterford West,  
Queensland 4133, Australia  
info-aus@mehler-technologies.com

**China / Mehler Technologies Office**  
No.9 Xingtang West Road  
Chunjiang Zhen, New District  
213034, Changzhou, China  
info-chn@mehler-technologies.com

**Manufacturing and sales**

**Mehler Technologies GmbH**  
Rheinstrasse 11  
D-41836 Hückelhoven  
info-de@mehler-technologies.com

**Mehler Technologies GmbH**  
Edelzeller Strasse 44  
D-36043 Fulda  
info-de@mehler-technologies.com

**Mehler Technologies s.r.o.**  
Šlechtova 860  
CZ-512 51 Lomnice nad Popelkou  
info-cz@mehler-technologies.com

cover photo by courtesy of Silek BV, NL